

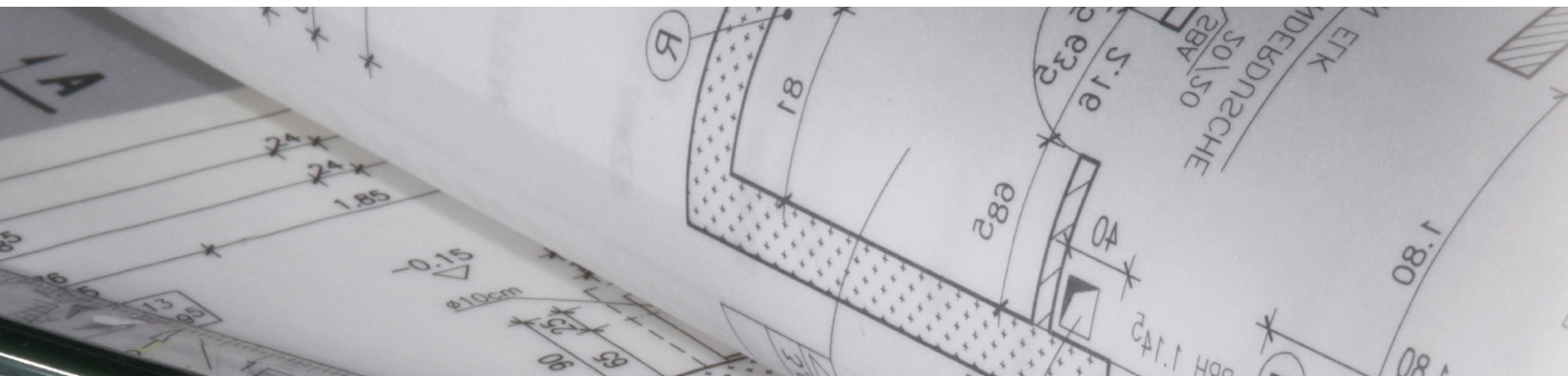


## Pentalift Low Profile Dock Lift

### Low Profile Surface Mounted Dock Lift



With over 25 years of experience manufacturing quality loading dock equipment, Pentalift is your single-source supplier for dock lifts, loading dock levelers, dock seals & shelters, vehicle restraints, and much more.



Engineered for Safety!



# Pentalift LPE Dock Lift Design Features

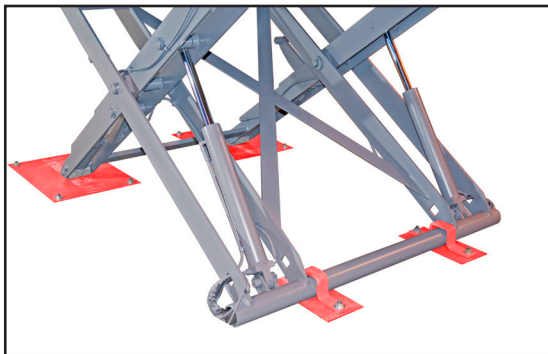
The Pentalift LPE dock lift, is a surfaced mounted lift designed for increasing efficiency and safety in loading / unloading trucks and trailers. The design of the LPE unit ensures maximized stability and full use of the platform area during product transfer. Cylinder placement is entirely beneath the platform, eliminating above platform obstructions common to other surface mount lift designs, such as vertical or mast type cylinder arrangements that protrude through and obstruct full platform use. The full use of the platform area and also provides the benefit of the capability to load / unload in all four directions across the platform for greater flexibility, efficiency and reduced product damage.

Plated access chain: Prevents operator from falling

High tensile steel checker plate hinged bridge and platform with structural supports

Optional toe sensor is electrically interlocked to the lowering circuit to stop the unit's downward motion if contact is made with any obstruction in lowering path

Scissor Legs: Solid steel one piece construction with precision reamed holes. Side by side leg arrangements are superior relative to load distribution and stability. All pivot pins are chrome plated



Optional retaining cradles and wear plates (shown in red to accommodate easier visualization) are a recommended option This option also increases the end edge load rating of the lift

Full use of platform due to no presence of cylinder towers or cylinder boxes. OSHA compliant 42" high removable steel guard rail c/w mid rail and 4" kick plate

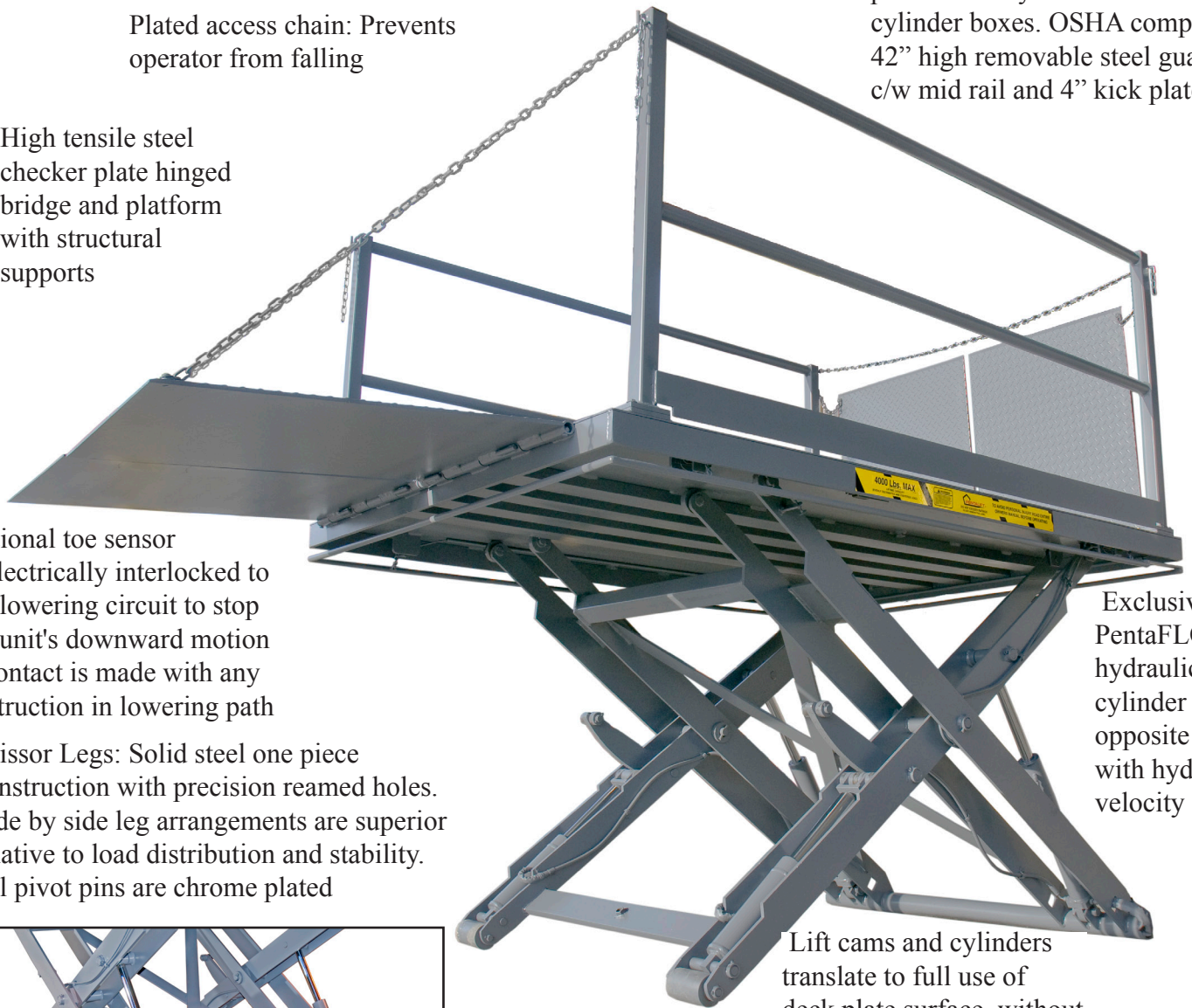
Exclusive PentaFLOW hydraulic bypass cylinder (see opposite page) with hydraulic velocity fuse

Lift cams and cylinders translate to full use of deck plate surface, without obstructions

Surfacing installation alleviates the requirement to provide a pit to install the lift into

"Lubricated for life" maintenance free bearings at all pivot points

Shipped complete: Finished product, power unit, controls and all other components are factory load-tested and shipped fully assembled, complete with oil



## Exclusive Pentalift

**PentaFLOW**

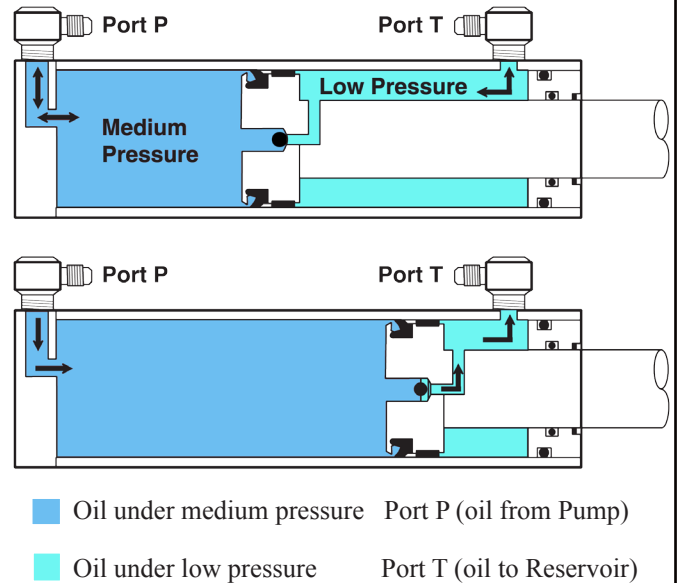
## Hydraulic Cylinder

The lift cylinder is the heart on any hydraulic lift system, Pentalift's exclusive design ensures the longest cylinder life, reduces maintenance and eliminates oil spills.

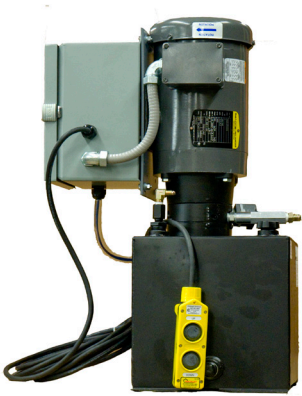
### Here's How it works:

Pentalift's PentaFLOW cylinder is completely sealed from the surrounding atmosphere and all components are continuously bathed in fresh oil. Contamination and deterioration of the cylinder cannot occur. When the cylinder reaches full extension, the bypass valve opens and allows oil to flow through the piston to the rod side of the cylinder, out the port, and back to the reservoir. This prevents the cylinder from dead ending and building high stresses in the cylinder, equipment structure and hydraulic system. Air in the cylinder is automatically removed through the bypass valve eliminating the need for manual bleeding which often results in oil spills and contamination.

Note: Precision turned, ground, polished and chrome plated cylinder rod and "drawn over mandrel" precision honed barrels are standard on all PentaFLOW cylinders.



## Standard remote electro-hydraulic power unit



## Optional platform mounted power unit in enclosure



Remote power unit with integral oil reservoir, Totally enclosed motor incorporates NEMA 12 pre-wired control panel with motor starter, power unit is completely assembled, filled with oil and factory tested prior to shipment, hydraulic fluid is mineral based oil, comes with up down control pendant.

## Pentalift LPE Dock Lift Models: The following models and sizes are available

Model Number	Platform Size (W X L)
LPE58_	60 in x 96 in
LPE510_	60 in x 120 in
LPE68_	72 in x 96 in
LPE610_	72 in x 120 in
LPE78_	84 in x 96 in
LPE710_	84 in x 120 in
LPE88_	96 in x 96 in
LPE810_	96 in x 120 in

Note: Available in 4,000 lb, 5,000 lb, 6,000 lb, 8,000 lb capacity. All capacities provide 54" of vertical travel. 4,000 lb, 5,000 lb, 6,000 lb models have a low height of 5 3/4", 8,000 lb model a low height 6". (Add 1/4" to all low height's if ordered with retaining cradles and wear plates). Side and end edge load capacities are 50% of lift capacity. Retaining cradles and wear plates are recommended for all installations and increase the end edge load capacity to 75% of lift capacity. This design of dock lift is recommended for use with pallet trucks and push carts; it is not recommended for use with fork lift trucks or powered loading equipment.

## Pentalift LPE Low Profile Dock Lift Options

- Toe sensor
- Bridge lengths up to 42 inches
- Aluminum bridge(s)
- Split bridge(s)
- Portable dolly
- Power units up to 5 horsepower
- Platform mounted power units
- Platform mounted push button
- Retaining cradles and wear plates
- Coil cord for control pendant





## **Pentalift LPE dock lift facilitates easy installation and safe and efficient product transfer**

The Pentalift LPE dock lift, is surfaced mounted. This facilitates easy installation and lower installation costs. A pit is not required for installation of the lift.

Push button control that allows the lift to be raised, lowered and stopped anywhere in the operating range increases efficiency and safety in the loading / unloading trucks and trailers. As well, it provides the flexibility to load / unload an extremely wide range of trucks and trailers.

Safety is increased by allowing a pallet trucks or carts to be used in conjunction with the dock lift to load and unload, this eliminates unsafe lifting practices. The travel course for the pallet truck or cart is flat, this eliminates safety concerns related to ramps or significant inclines and substantial load weights on pallet trucks or carts without any means of braking.

*"Our Primary Goal is to engineer and build the best products to ensure the ultimate in user safety and product reliability"*

*Paul Pedersen  
President  
Pentalift Equipment Corporation*

Individual product catalogs are available and can also be found on our website.  
Pentalift also manufacturers a complete line of lift tables for your in plant material handling needs.

Note: Some photos may reflect products with optional features. All Pentalift Equipment Corporation products are subject to design improvement through modification without notice.

Pentalift Equipment Corporation  
P.O. Box 1060, Guelph, ON N1H 6N1 Canada P.O. Box 1510, Buffalo, NY 14240 – 1510 USA  
CP 1219 Pointe-Claire, QC Canada H9S 5K7  
Phone: (519) 763 3625 Fax: (519) 763 2894

[www.pentalift.com](http://www.pentalift.com)

0111D030 Printed in Canada