

▶ **SPEED**

The ThermaFreeze opens at up to 130 inches per second.

▶ **CONTROLS**

Albany's UltraSmart™ Controller is people friendly and extremely intuitive. Control box includes an integrated rotary disconnect standard.

▶ **CLIMATEX INSULATED PANEL MATERIAL**

Albany's energy efficient Climatex panel material consists of two layers of vinyl material wrapped around heavy-duty polyethylene air-pocket insulation.

▶ **HEATED SIDE FRAMES AND OPTIONAL BLOWER UNIT**

ThermaFreeze uses heated aluminum side frames and optional blowers to minimize frost build up.

▶ **SUREGUARD SAFETY LIGHT CURTAIN**

SureGuard offers a full curtain of protection up to approximately six feet high.

▶ **WIRELESS SAFETY SYSTEM**

Eliminate coil cords with Albany's patent pending wireless safety system.

▶ **MAINTENANCE**

The self-repairing ThermaFreeze is a low maintenance door designed to open and close, day after day, year after year.

Albany Door Systems' self-repairing, super fast ThermaFreeze high speed door is ideally suited for high traffic cold storage and freezer applications. With opening speeds up to 130 inches per second, the ThermaFreeze improves workflow and decreases air infiltration. The insulated door panel, heated side frames, optional blowers, and tight seals improve energy efficiency, minimize safety hazards, and save energy costs. The Albany ThermaFreeze is low maintenance, safe, and can take a hit.



Photo shown includes additional options.

# THERMAFREEZE™

Albany's self-repairing ThermaFreeze high speed industrial doors are tough, built to last, and engineered for high cycles in cold storage and freezer applications.



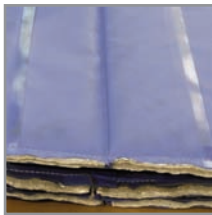
## BacFlap™ Auto-Reset System

When impacted the door panel can be reset without tools. BacFlap™ insures against panel tearing.



## UltraSmart™ Controller with Wireless Safety System

UltraSmart™ offers opening speed up to 130 inches per second. Troubleshoot problems using the digital display on the control screen. Wireless Safety System eliminates costly repairs and downtime associated with coil cords.



## Climatex Insulated Panel Material

Albany's energy efficient Climatex panel material consists of two layers of vinyl material wrapped around heavy-duty polyethylene air-pocket insulation.



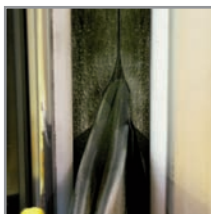
## Heated Side Frames and Optional Blower Unit

ThermaFreeze uses heated aluminum side frames and optional blowers to minimize frost build up. Moisture or frost on the door can drip to the floor and ice over, causing safety hazards.



## SureGuard Safety Light Curtain

SureGuard offers a full curtain of protection up to approximately six feet high. As a result, loads cannot go below or through the beams without being detected. Once an object is detected, the door automatically retracts.



## Weather Seal

Weather seals on the header and side frames minimize air infiltration, saving on energy costs while climate controlling the environment. When the door is down, the panel is sealed.



## Wireless Safety System

Cut your cord with Albany's patent pending Wireless Safety System and eliminate costly repairs and downtime associated with coil cords.