

# MODU D Series

*Thermoplastic chain with  
stainless steel structure*

**modu**<sup>®</sup>  
**MODU System**

Publication: D2011Feb



Rgn No : Q146288  
ISO 9001:2008 Certified

## What is D series Conveyor?

The D series conveyor is MODU System's new modular conveyor which integrates a Stainless Steel frame instead of the traditional Aluminum base frame. The unit is available in MODU System's standard chain widths of 63 mm (MS), 83 mm (MM), and 140 mm (ML). The conveyor can be configured to offer both horizontal and vertical change of direction. All conveyor components except for chain and guide supports are made from 100% Stainless Steel this allows MODU System's conveyors to meet the most stringent demands of our customers. The D Series conveyors are designed with similar concept as M series, they are easy to install and reconfigure. They are also extremely reliable, easy to transport and have an aesthetically pleasing look. With all these standard features the D series is still very cost effective solution.

## Application

- Food Processing Industry, where aggressive cleaning agents must be used for hygienic reasons
- Pharmaceutical Industry, where hygiene is extremely important
- Cosmetics Industry
- Personal Care Industry
- Industries that require extremely clean work environments that also require quick and easy cleaning



## Features

- Open design allows cleaning with foam followed by water rinsing
- Minimum dust accumulation
- Easily integrates with devices such as sensors and diverters
- Flexible and easy to install to match site requirements
- Operating temperature ranges from -20°C to 60°C
- Operating humidity levels of 10% to 95%
- Low noise, and power consumption
- Conveyor designed for speed ranges of 3m/min to 50m/min
- Designed to adhere to the highest levels of safety standards

## Flat Pack

MODU System shipping concept makes storage & handling of parts very efficient. Fast delivery and locally maintained stock allows us to cost effectively provide automation products to Japan, United States, United Kingdom, Australia, China, India, and ASIAN countries.



*Packed food processing line.*



*Packed food processing line.*



*Multiple conveyor lines in dairy production.*

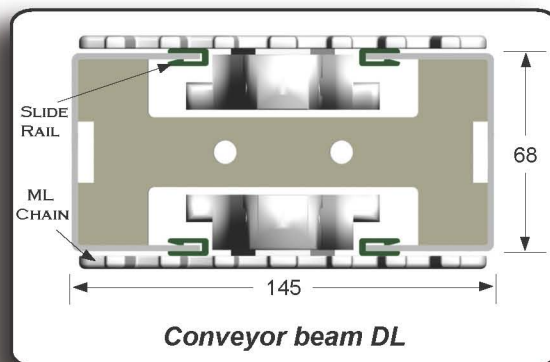
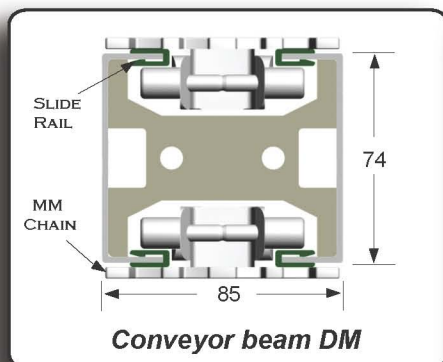
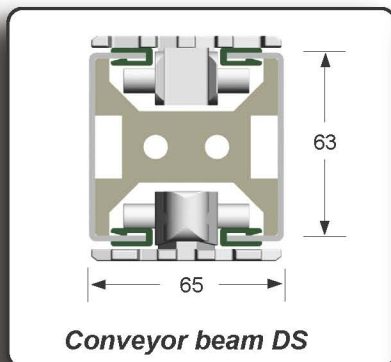


*Rigid support structure with easy cleaning design.*



## Conveyor Beam

The conveyor beam consists of two stainless steel profiles joined by connecting plates.



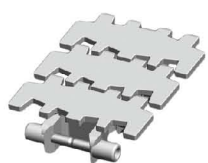
## Conveyor Chain

MODU System exclusive Acetal co-polymer chain is the main staple of every MODU System conveyor. The chain is designed to make tight horizontal and vertical bends while maintaining a low coefficient of friction. The chain also is extremely quiet and maintains high cleanliness levels. There are three type of MODU System Conveyor chains, the comparison of all three chains are shown in the table below:

Chains	DS2	DM3	DL2
Chain Width	63mm	83mm	140mm
Tensile Strength at 20°C	3000N	5000N	6500N
Max working tension at 20°C	600N	1000n	1300N
Working temperature	-20°C to 60°C	-20°C to 60°C	-20°C to 60°C
Standard conveyor speed	3-50m/min	3-50m/min	3-50m/min
Maximum conveyor length	30m	30m	30m
Minimum turning radius	140mm	160mm	200mm
Link spacing	25.4mm	33.5mm	44.45mm
Chain weight (plain chain)	0.75kg/m	1.2kg/m	1.7kg/m
Maximum item weight	10kg	15kg	20kg
Maximum weight on conveyor	150kg	200kg	300kg

Chain material available:

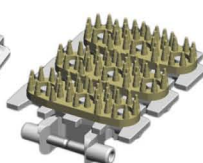
- Plain Chain (POM)
- Anti-Static Chain
- Kevlar Chain



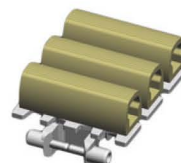
Plain Chain



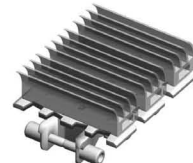
Friction Chain



Finger Gripper Chain

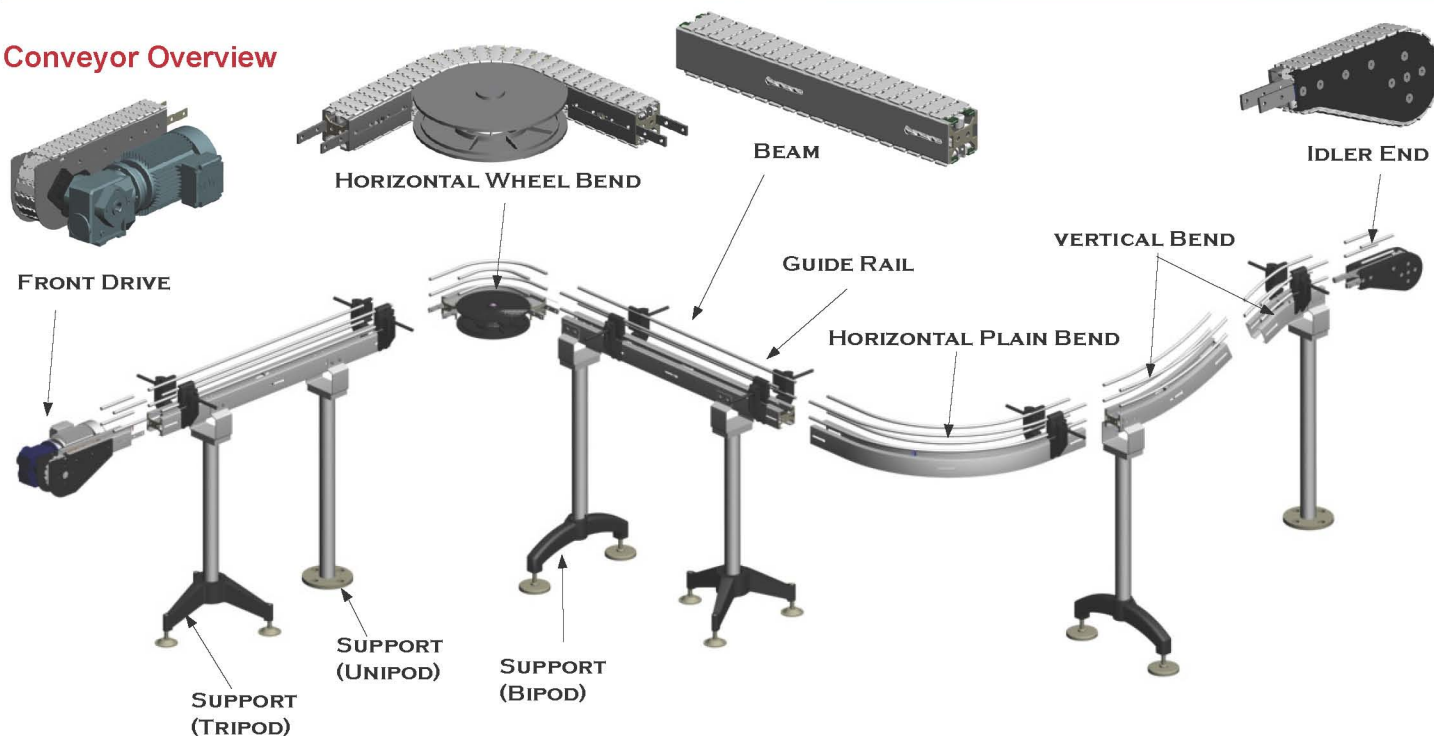


Box Gripper Chain



Wedge Gripper Chain

## Conveyor Overview



For further information, contact us at:

### United Kingdom

18, Woodside Park  
Catteshall Lane, Godalming  
Surrey GU7 1LG, UK  
Tel: +44(0)-1483-791 717  
Fax: +44(0)-1483-791 702

### United States

3601 La Grange Parkway  
Toano, VA 23168, USA  
Tel: +1 (757) 250-3413  
Fax: +1 (757) 250-3523

### Malaysia

7, Jalan Saham 23/3,  
40000 Shah Alam,  
Selangor, Malaysia  
Tel: +60-3-5548 7333  
Fax: +60-3-5548 7222

### Singapore

Blk 22, Woodlands Link  
#04-66 Singapore 738734  
Tel: +65-6257 0811  
Fax: +65-6257 3811

### China

中国 广东省 东莞市 南城区  
胜和鸿福西路 国际商会大厦13A05室  
电话: +86-769-26984980  
传真: +86-769-26984979

Email: [info@modu-system.com](mailto:info@modu-system.com)

Website: [www.modu-system.com](http://www.modu-system.com)